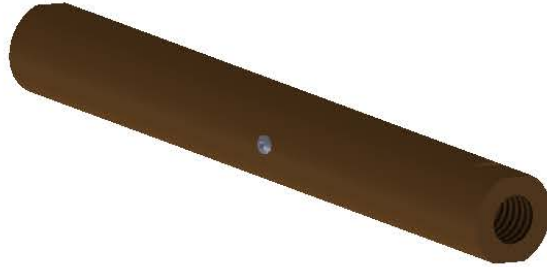


Travis UGD

Breakaway Connector (BAC)

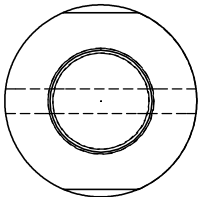
Rivet Installation Guide

How to properly replace breakaway rivets step by step.



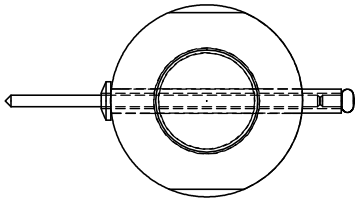
Step 1.

Completely remove the old rivet from the breakaway assembly.



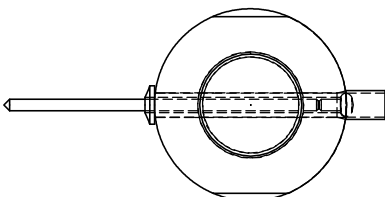
Step 2.

Make sure the holes are lined up, then insert the new rivet.



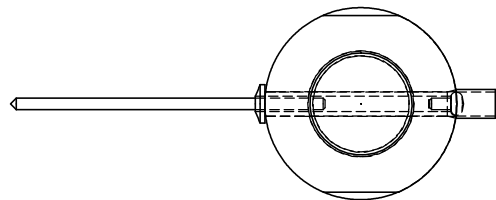
Step 3.

Using a manual or pneumatic pop rivet gun install the new rivet by pulling the mandril thru the rivet body.



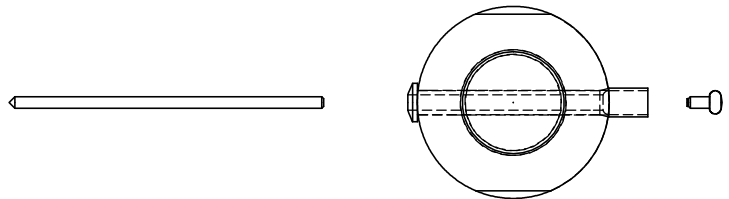
Step 4.

Pull until the mandrel breaks at the notch leaving the mandrel head in the rivet body.



Step 5.

Completely remove the mandrel by pushing the spent portion of the mandrel back thru the rivet body. This can also be achieved with a small punch.



Step 6.

Once you have completed steps 1-5 look thru the rivet hole. Make sure no obstructions are left in the rivet body. Day light should be visible when looking thru the rivet.

